

Rotary Airlock Feeders



Advanced Bulk and Conveying, Inc., can provide a rotary airlock feeder for every application where a dry material in powdered or granular form is gravity fed or conveyed pneumatically. The standard fall through airlock is provided completely assembled and includes TEFC motor with right angle gear drive, chain drive with guard, cast iron body and carbon steel rotor.

Options:

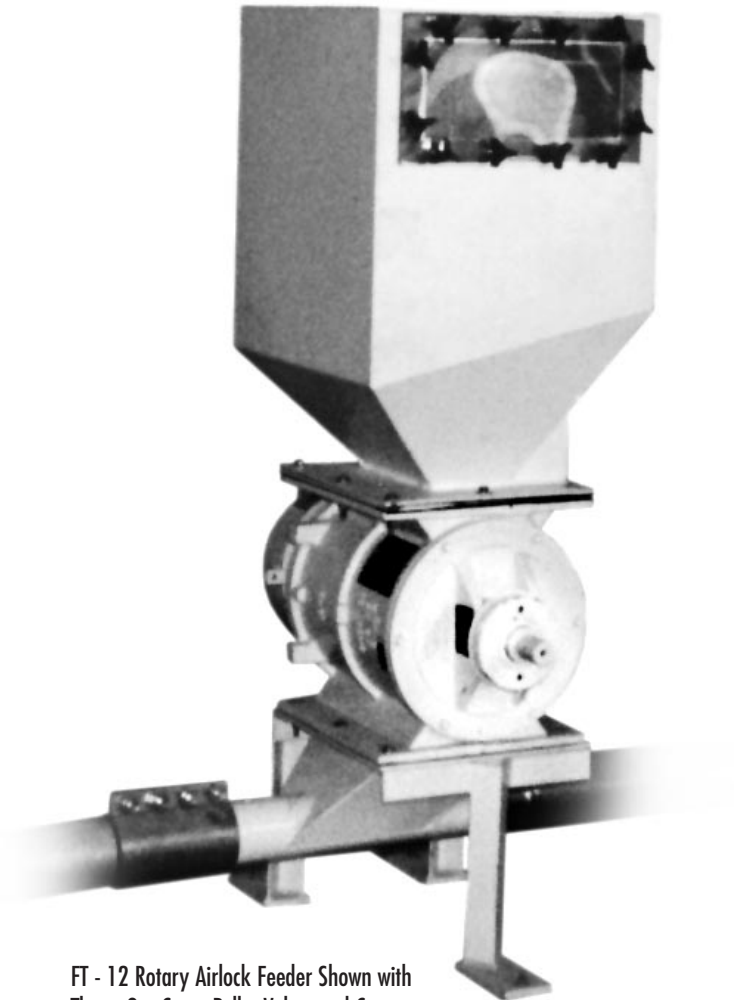
- Chrome Plated Interior
- Stainless Steel Rotors
- Shaft Air Purge
- Open or Closed End Rotors
- Relief Vanes (Recommended for Plastic Pellets)
- Adjustable Tips
- Housings Available in Stainless Steel

Accessories:

- Throw-Out Cone
- Inlet Adapters
- Vented Inlet Adapters
- Convey Line Discharge Adapters
- Maintenance Gates
- Pellet Valves
- Zero Speed Switches

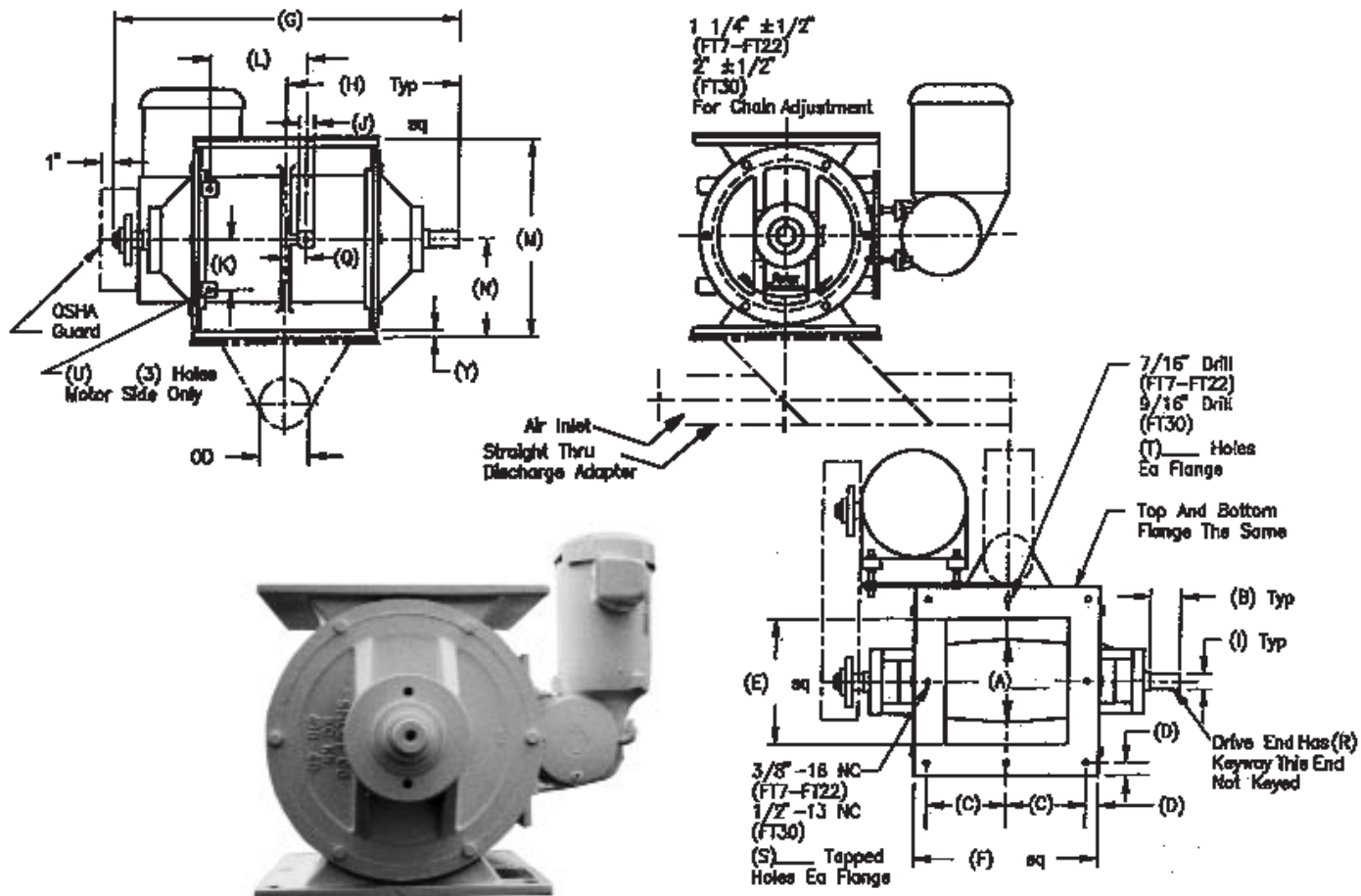
	Rotor RPM	Lbs. Min.	Pounds Per Hour
FT7	10	29.00	1,750.00
	15	44.10	2,650.00
	22	64.60	3,880.00
FT9	10	66.01	3,961.00
	15	99.20	5,952.00
	22	145.50	8,730.00
FT11	10	111.50	6,690.00
	15	173.25	10,410.00
	22	254.10	15,246.00
FT12	10	185.50	11,130.00
	15	278.25	16,695.00
	22	408.10	24,486.00
FT14	10	269.50	16,170.00
	15	404.25	24,255.00
	22	592.90	35,574.00
FT16	10	392.00	23,520.00
	15	588.00	35,280.00
	22	862.40	51,744.00
FT18	10	637.00	38,220.00
	15	955.50	57,330.00
	22	1,401.40	84,084.00
FT22	10	980.00	58,800.00
	15	1,470.00	88,200.00
	22	2,156.00	129,360.00

Sizing Chart: Calculated at 70% pocket fill efficiency, using 35 lb./cu. ft. pellets.



FT - 12 Rotary Airlock Feeder Shown with Throw-Out Cone, Pellet Valve, and Convey Line Discharge Adapter.

Rotary Airlock Feeders (continued)



FEEDER DIMENSIONS

Model	FT7	FT9	FT11	FT12	FT14	FT16	FT18	FT22
A	4.25	4.75	5.88	6.5	7.75	9	11	11.75
B	1.75	1.75	2	2	2.25	2.5	3.25	3.75
C	4.75	5.25	5.75	6.5	5.25	5.5	6	5
D	.75	.75	.75	1	.625	.75	1	1
E	6	8	9	10	12	13	15	16
F	11	12	13	15	17	18	20	22
G	18.75	21.38	24.56	28.125	29.69	33.25	39.625	39.875
H	8.25	10.69	10.56	14.06	13	16.625	21.5	19.938
I	1	1	1.25	1.25	1.75	1.75	2.5	2.5
J	1	1	1.25	1.25	1.25	1.5	1.5	1.5
K	2.25	2.5	4	4	5.375	5.375	6	6
L	4	4.25	6.25	6.25	8	8	8	10.125
M	9.88	12.5	14.63	15.75	17.63	19.63	21.75	25.875
N	4.96	6.25	7.31	7.875	8.81	9.81	10.625	12.938
P	5	5.875	6.875	7.875	8.5	9.625	11.56	12.75
R	.125 x .25	.125 x .25	.125 x .25	.125 x .25	.188 x .38	.188 x .38	.312 x .625	.25 x .5
S	—	2	2	2	4	4	4	6
T	8	6	6	6	8	8	8	10
U	.38 - 16	.38 - 16	.38 - 16	.38 - 16	.5 - 13	.5 - 13	.5 - 13	.5 - 13
Y	.38	.563	.563	.563	.75	.75	.75	.75
Closed End Rotor	.083	.21	.41	.64	.96	1.4	2.3	3.6
Open End Rotor	.12	.27	.47	.75	1.1	1.6	2.6	4.0
Shipping Wt. w/Motor (lbs.)	165	225	295	340	660	780	1060	1400

TO ORDER:

1. State bulk density and type of material.
2. Specify rate required per hour.
3. State pressure, vacuum or atmospheric condition on both sides of the airlock.

Net Cubic Feet Displacement Per Revolution