

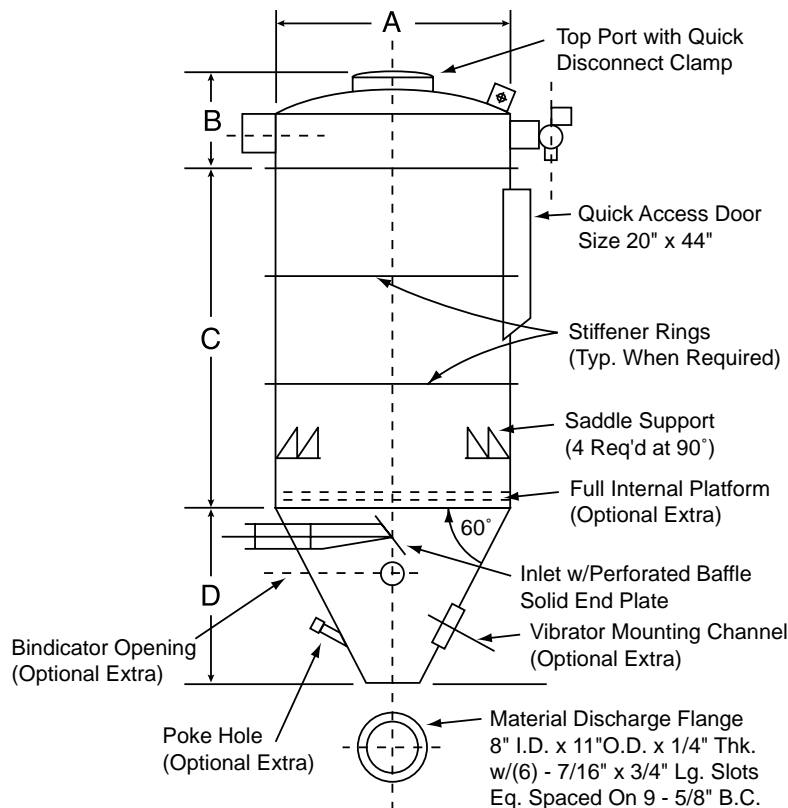
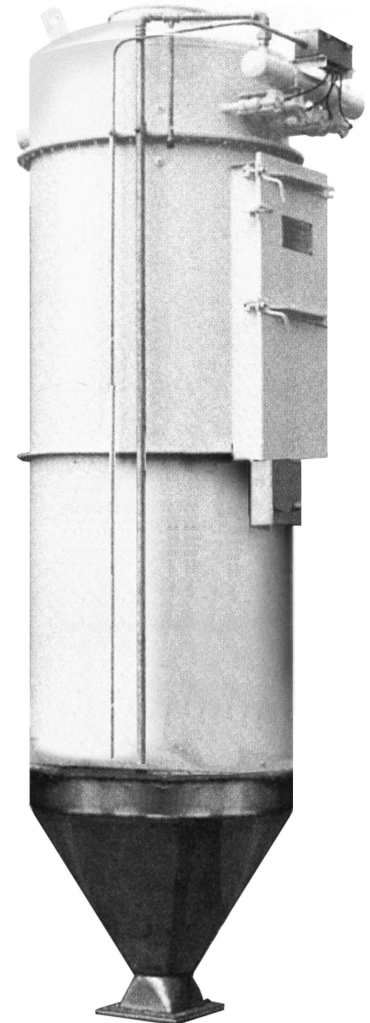
# Filter Receivers



Filter receivers are used instead of a cyclone collector in a railcar unload system to separate material and dust from air when conveying powder, granular, or pellet material. Advanced Bulk and Conveying, Inc. filter receivers operate on reverse air pulse principle. When product and dusty air enters the filter receiver the heavy product falls by gravity to the discharge cone and rotary airlock. The dusty air passes through the filter bags, leaving dust on the bag exterior. Filtered air is drawn by vacuum through the vacuum pump and is exhausted to atmosphere. An electric timer actuates valves in sequence, which releases compressed air through venturi tubes. Shock waves formed in the venturi travel downward and release caked dust from the bag exterior onto the product in the discharge cone. The standard unit is of carbon steel construction, includes 110 VAC auto sequencing reverse pulse timer controls in a NEMA 4 enclosure, 16 oz. polyester felt filter bags, differential pressure gauge, inlet stub in cone, outlet stub on the filter head, and industrial enamel coated exterior.

### Options:

- Top Bag Removal
- FDA Epoxy Interior
- Service Access Platform Ladder
- All Stainless Steel Construction
- Dual Access Doors for Ease of Maintenance
- Top Port with Quick Disconnect Clamp
- Internal Safety Grid
- Level Switch Opening
- Vibrator Pad
- 3"Ø Poke Hole
- Support Legs
- Selection of Filter Media



**See Chart Next Page**

# Filter Receivers (continued)



Model No.	No. of Bags	Bag Length in Inches	Filter Area Sq. Ft.	Outside Diameter in Inches	Clean Air Plenum Ht. in Inches	Shell Height in Inches	Cone Height 8" Opening in Inches	Cone Height 10" Opening in Inches	Cone Height 12" Opening in Inches	Comp. Air Requirements SCFM@90-100 PSIG	Gross Weight (Lbs.) 100" W.G. Design Pressure	Gross Weight (Lbs.) 17" Hg Design Pressure
				"A"	"B"	"C"	"D"	"D"	"D"			
FR8-36	8	36	34	30	21	49	19	18	16	4.1	425	425
FR8-58	8	58	58	30	21	71	19	18	16	4.5	545	545
FR8-84	8	84	85	30	21	97	19	18	16	5.0	670	685
FR8-100	8	100	102	30	21	113	19	18	16	5.0	835	850
FR14-36	14	36	60	36	24	49	24	23	21	5.0	560	560
FR14-58	14	58	101	36	24	71	24	23	21	5.5	710	730
FR14-84	14	84	148	36	24	97	24	23	21	5.8	905	925
FR14-100	14	100	178	36	24	113	24	23	21	5.8	1090	1110
FR18-36	18	36	77	42	26	49	29	28	26	5.8	700	745
FR18-58	18	58	130	42	26	71	29	28	26	6.0	840	900
FR18-84	18	84	191	42	26	97	29	28	26	6.5	1105	1165
FR18-100	18	100	229	42	26	113	29	28	26	6.5	1335	1420
FR24-58	24	58	173	48	28	71	35	33	31	6.7	1180	1210
FR24-84	24	84	254	48	28	97	35	33	31	7.0	1480	1510
FR24-100	24	100	305	48	28	113	35	33	31	7.0	1690	1715
FR32-58	32	58	230	54	30	71	40	38	36	7.5	1420	1525
FR32-84	32	84	339	54	30	97	40	38	36	7.8	1780	1910
FR32-100	32	100	406	54	30	113	40	38	36	7.8	2025	2180
FR42-58	42	58	302	60	32	71	45	43	42	8.0	1715	1860
FR42-84	42	84	445	60	32	97	45	43	42	8.5	2135	2315
FR42-100	42	100	533	60	32	113	45	43	42	8.5	2460	2860
FR54-58	54	58	389	66	33	71	50	49	47	9.0	1950	2595
FR54-84	54	84	572	66	33	97	50	49	47	9.5	2410	3120
FR54-100	54	100	686	66	33	113	50	49	47	9.5	2715	3590
FR62-58	62	58	446	72	35	71	56	54	52	10.6	2240	3050
FR62-84	62	84	657	72	35	97	56	54	52	11.0	2750	3600
FR62-100	62	100	787	72	35	113	56	54	52	11.0	3025	4095
FR72-58	72	58	518	78	37	71	61	59	57	13.0	2560	3605
FR72-84	72	84	763	78	37	97	61	59	57	13.5	3065	4195
FR72-100	72	100	914	78	37	113	61	59	57	13.5	3440	4750
FR84-58	84	58	605	84	37	71	66	64	62	14.5	2865	4125
FR84-84	84	84	890	84	37	97	66	64	62	15.3	3410	5140
FR84-100	84	100	1067	84	37	113	66	64	62	15.3	4210	5850
FR106-58	106	58	763	90	38	71	71	69	68	22.0	3325	5075
FR106-84	106	84	1124	90	38	97	71	69	68	27.0	3990	6230
FR106-100	106	100	1346	90	38	113	71	69	68	27.0	4810	7000
FR121-58	121	58	871	96	39	71	76	75	73	25.5	3625	6080
FR121-84	121	84	1283	96	39	97	76	75	73	30.6	4400	6980
FR121-100	121	100	1537	96	39	113	76	75	73	30.6	5295	7980