

Bin Vent Filters



Bin vent filters are used to separate fine material from air when pressure filling a surge bin or a silo. Advanced Bulk and Conveying, Inc., bin vents operate on reverse air pulse principle. Dusty air enters the unit and passes through the filter bags, leaving dust on the bag exterior. Filtered air is exhausted to the atmosphere at the top of the unit. An electric timer actuates valves in sequence, which releases compressed air through venturi tubes. Shock waves formed in the venturi travel downward and release caked dust from the bag exterior.

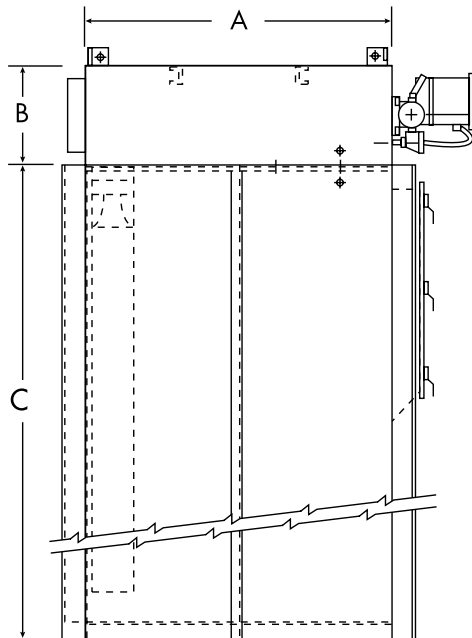
The standard unit is of carbon steel construction, includes 110 VAC auto sequencing reverse pulse timer controls in a NEMA 4 enclosure, 16 oz. polyester felt filter bags, differential pressure gauge, exhaust vent, and industrial enamel coated exterior.

Options:

- Top Bag Removal
- FDA Epoxy Interior
- Exhaust Fan
- Service Access Platform and Ladder
- All Stainless Steel Construction
- Dual Access Doors for Ease of Maintenance
- Selection of Filter Media
- Internal Safety Grid



Bin vent shown with optional exhaust fan, work platform and ladder.



Model No.	No. of Bags	Bags Length Inches	Filter Area (sq. ft.)	Dimensions			Compressed Air Req'd. (SCFM)	Gross Wt. (Lbs.)
				A	B	C		
BV9-36	9	36"	39	24"	16"	47"	4.2	325
BV9-58	9	58"	65	24"	16"	69"	4.5	425
BV9-84	9	84"	95	24"	16"	96"	5.0	500
BV16-36	16	36"	69	32"	16"	47"	5.5	475
BV16-58	16	58"	115	32"	16"	69"	5.8	600
BV16-84	16	84"	170	32"	16"	96"	6.2	725
BV25-36	25	36"	108	40"	16"	47"	6.5	625
BV25-58	25	58"	180	40"	16"	69"	6.7	775
BV25-84	25	84"	265	40"	16"	96"	7.0	950
BV36-84	36	84"	382	48"	16"	96"	8.5	1250